

Three Detectorists



Fig. 1. A small selection of pre-1947 silver coins.



Fig. 2. My entire collection of pre-1947 silver coinage.

I first began to be involved with this great hobby around three years ago, when my wife Gayle bought me a Garrett Ace 250 – I just knew it was going to be a good thing from the start. My brother Stephen and my father Steve also purchased the same model of detector at pretty much the same time, so naturally we all got together and started detecting. At first it was just small forays into our back gardens – in the early stages, even though we didn't fully know or understand our machines, we were still finding Victoria pennies and other items, and so it progressed from there.

Eventually we gained some local permissions, many of which had some serious history attached to them. I recall finding a creamy white coloured ball-shaped lead thing and thinking "What on earth is this?" Quickly researching it, I discovered that it was a musket ball dating back to the 16th century, and was delighted with it. Of course we all found veritable piles of corroded coins too, most of which were probably Georgian coppers. Once we

started really getting into it, we began searching with local detecting groups and going on organised digs – consequently the quality and number of our finds improved drastically.

Since I am only 41, when I find pre-1947 silver coins, like sixpences, shillings and florins I am always really pleased with them (Fig. 1). As, unlike my father, I've not experienced such coins being in circulation, they are always good talking points between us all. My entire collection of pre-1947 silver coins is shown in Fig. 2. Like all beginner detectorists I guess, when you're going out and you're not finding that much, you start to think "Maybe this detector isn't so good, there must be better ones out there." Well anyway, that's what I believed at the time, so I quickly upgraded to a Garrett AT Pro, then a Teknetics T2, an XP Deus and now finally to a Rutus Alter 71, which in my personal opinion and experience is a fantastic detector and so I will be sticking with it. Of course that's influenced by it being the detector with which I have made my

best finds! Finds such as the Roman brooch shown in Fig. 3 and many other Roman coins and artefacts, all of which were found in Lincolnshire with the Alter 71.

We have also travelled some considerable distances to attend digs and rallies, and on one such dig in Yorkshire I found my first ever hammered coin – an Edward I Irish issue penny shown in Figs. 4a & b. In the same area as this Irish coin, I also found a lovely heraldic horse harness pendant (Fig. 5). Another find that I particularly like is the late Victorian or Edwardian silver and gold watch fob shown in Fig. 6, although the silver thimble shown in Fig. 7 certainly gives it a good run for its money.

Between us all, we have joined so many groups connected with this hobby that there just isn't enough time to visit all their weekly rallies. One group that I am a member of is the Lancashire Treasure Hunters, which is superbly run by Chris Holmes. Although it's a small group I've found more on their digs than on any others.



Fig. 3. Roman fibula brooch.



Figs. 4a & b. Obverse and reverse of an Edward I Irish issue penny.



Fig. 5. Medieval heraldic horse harness pendant.

Carl Bowden

Fig. 6. Late Victorian or Edwardian silver and gold watch chain fob.



Fig. 7. Silver thimble.

Fig. 8. Section of Viking boat-shaped strap-end.



Fig. 9. Post-medieval whistle.



Fig. 10. Slightly later dating whistle.



Fig. 11. Buckle clasp with possible connections to Coventry.

We currently have 500 acres of personal land up in Lincolnshire and we have had some amazing finds there too. These include more Roman coins and what is believed to be a section from a Viking boat-shaped strap-end that would date to AD 960-1060 (Fig. 8).

All three of us are very keen to have our finds recorded by PAS and we report all our items appropriately. Two recent finds that were reported and recorded are this post-medieval whistle (Fig. 9) which has the PAS reference of LVPL-4EF44C and another whistle (Fig. 10) that has the PAS reference LVPL-OEDE6C. The experience we have had with PAS is brilliant and one FLO who particularly sticks in our minds is Vanessa Oakden who was our locally based FLO for some time. We could always ask her for an identification on any find we made and she would come back promptly with very detailed responses. A selection of some of our more recent finds can be seen in Figs. 11-16.

Finally, we finish with the mystery

artefact shown in Fig. 17. We think it's a Roman erotic knife handle, the FLO thinks its medieval – what do you think? I can honestly say that between the three of us detecting over the last three years we have found some amazing items, admired some fantastic scenery and met some really wonderful people who share our interest in unearthing, recording and preserving our heritage.

Like many detectorists out there, the measure of a good trip out for all three of us seems to be the finding of a hammered coin and we hope to find many more in 2018. So from three relatively new beginners, we would like to wish the readers of *Treasure Hunting* magazine all the very best for the future and happy hunting. TH



Fig. 15. Small hammered silver Polish coin.



Figs. 12a & b. Obverse and reverse of an Elizabeth I sixpence.



Fig. 13. Hammered cut half and a cut quarter.



Fig. 14. Possible military cap badge.



Fig. 16. Very decorative strap-end.

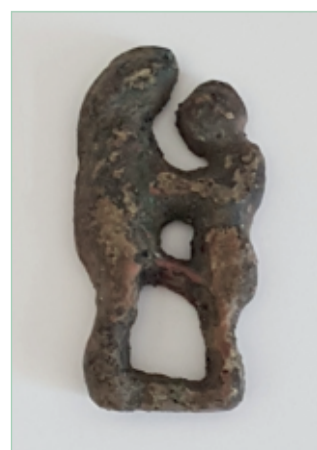


Fig. 17. Mystery artefact, most probably a Roman erotic themed knife handle.